

ROOFTOP UNIT SCHEDULE																										
MARK	MANUFACTURER/MODEL NO.	SERVICE	NOMINAL COOLING (TONS)	SUPPLY FAN DATA				COOLING COIL DATA				ELEC. HEAT DATA		FILTER DATA	COND. FAN DATA			COMPRESSOR DATA				UNIT ELECTRICAL DATA			WEIGHT (LB)	REMARKS
				SUPPLY (CFM)	O.A. (CFM)	MOTOR (HP)	E.S.P. (IN WG)	EAT	LAT	TOTAL (MBH)	SEN. (MBH)	KW	STAGES	SIZE	NO.	HP	NO.	HP	RLA	LRA	VOLTS/PH	MCA	MOCP			
								DB/WB	DB/WB																	
RTU-DB	TRANE / TSC060	DELI/BAKERY	5.0	2000	200	1.0	0.60	80/67	-	60	49	13.1	2	(2)20x35x2	1	0.40	1	4.3	15.9	110	208/3	54	60	700	1 - 6	
NOTES: 1. STANDARD FACTORY CONTROLS. UNIT CAPACITY BASED ON ARI RATING CONDITIONS. 2. ROOF CURB FOR NEW INSTALLATIONS (INCLUDED IN UNIT WEIGHT) AND COIL GUARDS. 3. EXISTING ROOF CURB TO BE USED WHEN POSSIBLE. ADAPTOR CURB FURNISHED BY SESCO (WHEN REQUIRED). 4. M.C. TO PROVIDE START-UP SERVICES FOR NEW ROOF TOP UNITS. 5. MOTORIZED O.A. DAMPER, 0-25%, WITH INTAKE HOOD. 6. PROVIDE THROUGH THE BASE SINGLE POINT POWER CONNECTION & UNPOWERED CONVENIENCE OUTLET.																										

AIR HANDLING UNIT SCHEDULE																				
MARK	MANUFACTURER/MODEL NO.	SERVICE	FAN DATA					COOLING DATA					HEATING DATA				FILTER DATA		APPROX. WEIGHT (LBS)	REMARKS
			SUPPLY (CFM)	O.A. (CFM)	T.S.P. (IN WG)	MOTOR (HP)	VOLTS/PH	EAT DB/WB	LAT DB/WB	DX COIL (CFM)	TOTAL (MBH)	SENSIBLE (MBH)	EAT (F°)	LAT (F°)	CAPACITY (MBH) (KW)		(QTY.) SIZE	TYPE		
AHU-1	HEATCRAFT / MHL31F	SALES AREA	15700	3600	--	--	208/3	--	--	--	--	--	SEE HEAT RECLAIM COIL SCHEDULE	--	--	THROWAWAY	--	1		
AHU-2	POMONA / LHN17F	COLD AISLE	12500	--	--	--	208/3	--	--	--	--	--	SEE HEAT RECLAIM COIL SCHEDULE	--	--	THROWAWAY	--	1		
NOTES: 1. EXISTING TO REMAIN. M.C. TO CLEAN EXISTING COILS. DATA PROVIDED IS PER AS-BUILT DRAWINGS AND IS PROVIDED FOR INFORMATIONAL PURPOSES ONLY.																				

MARK	MANUFACTURER/MODEL NO.	SERVICE	FAN DATA		COMPRESSOR DATA		ELECTRICAL DATA			WEIGHT (LBS)	REMARKS
			NO.	HP	NO.	HP (EA.)	VOLTS/PH	MCA	MOCp		
CU-1	RUSSELL / VCD55H22	AHU-1	--	--	--	--	208/3	--	--	--	1
NOTE: 1. EXISTING TO REMAIN. M.C. TO CLEAN EXISTING COILS. DATA PROVIDED IS PER AS-BUILT DRAWINGS AND IS PROVIDED FOR INFORMATIONAL PURPOSES ONLY.											

MARK	MANUFACTURER/MODEL NO.	SERVICE	AIRFLOW (CFM)	REFRIG. TYPE	REFRIG. CIRCUIT	TOTAL HEAT REJECTION (MBH)	RECLAIM HEAT (MBH)	COIL PIPING ORIENTATION	REMARKS
HRC-1	RUSSELL / --	AHU-1	SEE AHU	--	A	--	--	--	1
HRC-2	POMONA / --	AHU-2	SEE AHU	--	B	--	--	--	1
NOTE: 1. EXISTING TO REMAIN. M.C. TO CLEAN EXISTING COILS. DATA PROVIDED IS PER AS-BUILT DRAWINGS AND IS PROVIDED FOR INFORMATIONAL PURPOSES ONLY.									

FAN SCHEDULE												
MARK	MANUFACTURER/MODEL NO.	SERVICE	LOCATION	TYPE	AIRFLOW (CFM)	E.S.P. (IN WG)	NOMINAL RPM	DRIVE	ELECTRICAL DATA			REMARKS
									HP	WATTS	VOLTS/PH	
TF-1	S&P / SQD1550	WORKROOM	CEILING	INLINE	1400	0.50	1050	DIRECT	0.50	--	120/1	2
TF-2	COOK / GC642	DEPT. MGR'S OFFICE	CEILING	CABINET	500	0.25	1500	DIRECT	--	174	120/1	2
TF-3	COOK / GC642	ASSOCIATE TRAINING	CEILING	CABINET	500	0.25	1500	DIRECT	--	174	120/1	2
EF-1	PENN / --	MECHANICAL ROOM	ROOF	PROPELLER	--	--	--	--	--	--	208/3	1
EF-2	PENN / DX10	RESTROOMS	ROOF	--	600	--	--	--	--	--	120/1	1
EF-3	COOK / 100C17DEC	LOUNGE	ROOF	DNBLAST	300	0.375	1192	DIRECT	--	0.25	--	4
EF-4	COOK / GC342	JANITOR CLOSET	CEILING	CABINET	180	0.375	1674	DIRECT	--	71.5	120/1	3
EF-5	COOK / GC342	DELI/BAKERY CLOSET	CEILING	CABINET	180	0.375	1192	DIRECT	--	71.5	120/1	3
EF-6	CCOK / VCRD150	RACK OVEN	ROOF	UPBLAST	750	0.75	1260	DIRECT	0.334	--	120/1	5
NOTES:												
1. EXISTING TO REMAIN. DATA PROVIDED IS PER AS-BUILT DRAWINGS AND IS PROVIDED FOR INFORMATIONAL PURPOSES ONLY.												
2. TRANSFER FAN SHALL HAVE PLUG DISCONNECT AND VIBRATION ISOLATOR KIT. TF-1 WIRED THROUGH LIGHTING CIRCUIT. TF-2/TF-3 CONTROLLED BY INLINE THERMOSTAT. MC IS RESPONSIBLE FOR INSTALLATION OF INCLUDED 1" AIR FILTER IN RETURN GRILLE ON WORKROOM TRANSFER FAN.												
3. EXHAUST FAN SHALL HAVE PLUG DISCONNECT & WALL OR ROOF CAP WITH BIROSCREEN (REPLACE EXISTING CAP AS NECESSARY). M.C. TO INSTALL BALANCING DAMPER IN DUCT IF NOT EXISTING (FIELD VERIFY SIZE BEFORE ORDERING).												
4. EXHAUST FAN SHALL HAVE STANDARD DISCONNECT, FACTORY MOUNTED SPEED CONTROLLER, BACKDRAFT DAMPER AND ALUMINUM BIRDSCREEN.												
5. EXHAUST FAN SHALL HAVE NEMA DISCONNECT, UNIT MOUNTED SPEED CONTROLLER, HINGED BASE KIT, 12" GREASE TROUGH, ROOF CURB AND U.L. 762 LISTING.												

MARK	MANUFACTURER/MODEL NO.	MATERIAL	FRAME	TYPE	PANEL SIZE	CONN. SIZE	REMARKS
S1	-- / --	--	--	--	--	--	1
S2	METALAIRE / H4004-6	ALUM.	LAY-IN	SUPPLY; DOUBLE DEFLECTION GRILLE	24X24	14x14x12ø	2
E1	-- / --	--	--	--	--	--	1
E2	METALAIRE / CC5-6	ALUM.	LAY-IN	EXHAUST; GRILLE, 1/2x1/2x1/2 CORE	24x24	10x10	2
R1	-- / --	--	--	--	--	--	1
R2	METALAIRE / CC5F-6 01	ALUM.	LAY-IN	RETURN; GRILLE, FILTER BACK, 1/2x1/2x1/2 CORE	24x24	20x20	2
NOTES: 1. EXISTING TO REMAIN. DATA PROVIDED IS PER AS-BUILT DRAWINGS AND IS PROVIDED FOR INFORMATIONAL PURPOSES ONLY. CLEAN & RE-USE. 2. COLOR OF DEVICES SHALL BE OFF-WHITE UNLESS NOTED OTHERWISE. SESCO TO PROVIDE SQUARE TO ROUND ADAPTER (WHEN REQUIRED).							

MARK	HOOD DATA				EXHAUST FAN DATA						REMARKS
	MANUFACTURER/MODEL NO.	TYPE	SIZE	SWITCH LOC.	MANUFACTURER/MODEL NO.	CFM	SP	HP	RPM	VOLT/PH	
KH-1	CAPTIVEAIRE / V-ND-2	WALL MTD.	8'9"x4'6"	WALL MTD.	CAPTIVEAIRE / DU33HFA	920	0.50	0.33	1494	115/1	4, 5, 6
KH-2	-- / --	WALL MTD.	4'0"x3'6"	WALL MTD.	CAPTIVEAIRE / DU33HFA	600	0.40	0.33	1123	115/1	1, 2, 3
NOTES: 1. EXISTING TO REMAIN. DATA PROVIDED IS PER AS-BUILT DRAWINGS AND IS PROVIDED FOR INFORMATIONAL PURPOSES ONLY. 2. IT IS THE RESPONSIBILITY OF THE G.C. TO ENSURE THAT EXISTING FIRE SUPPRESSION IS REWORKED (AS REQUIRED) WHEN NEW EQUIPMENT IS PLACED UNDER THE EXISTING HOOD. 3. MC TO INSTALL NEW EXHAUST FAN. CONNECT TO EXISTING DUCT. 4. HOOD SHALL HAVE CONTROLS MOUNTED INSIDE HOOD FIRE CABINET AND 3" STAND-OFF. 5. CT PROVIDED BY SESCO; INSTALLED AND WIRED BY E.C. FOR AUTOMATIC OPERATION OF HOOD FAN(S). REFERENCE EMS WALK THROUGH NOTES FOR MORE INFORMATION. 6. HOOD SHALL BEAR THE FOLLOWING LABELS: UL, NSF, NFPA 96, BOCA, & SBCCS.											

ALL HVAC EQUIPMENT AND CONTROLS SHALL BE PURCHASED FROM SESCO dba MCNAMARA & CO. (336)-996-2220.

ALL BELT DRIVE FANS:
M.C. SHALL BE RESPONSIBLE FOR PROVIDING MATERIAL AND LABOR FOR BELT & DRIVE CHANGE, AS NECESSARY, TO PROVIDE THE SCHEDULED AIRFLOW. COORDINATE REQUIREMENTS WITH TAB CONTRACTOR.

MECHANICAL SUMMARY MECHANICAL SYSTEMS, SERVICE SYSTEMS AND EQUIPMENT	
METHOD OF COMPLIANCE PRESCRIPTIVE:	YES
CLIMATE ZONE:	4A
THERMAL ZONE	
WINTER DRY BULB:	13°F
SUMMER DRY BULB:	90°F
INTERIOR DESIGN CONDITIONS	
WINTER DRY BULB:	70°F
SUMMER DRY BULB:	74°F
RELATIVE HUMIDITY:	50%
BUILDING HEATING LOAD:	EXISTING
BUILDING COOLING LOAD:	EXISTING
MECHANICAL SPACING CONDITIONING SYSTEM	
UNITARY	
DESCRIPTION OF UNIT:	SPLIT SYSTEMS AND ROOF TOP UNIT
HEATING EFFICIENCY:	SEE SCHEDULES ON THIS SHEET
COOLING EFFICIENCY:	SEE SCHEDULES ON THIS SHEET
HEAT OUTPUT OF UNIT:	SEE SCHEDULES ON THIS SHEET
COOLING OUTPUT OF UNIT:	SEE SCHEDULES ON THIS SHEET
BOILER	
TOTAL BOILER OUTPUT. IF OVERSIZED, STATE REASON.	N/A
CHILLER:	
TOTAL CHILLER CAPACITY. IF OVERSIZED, STATE REASON.	N/A
LIST EQUIPMENT EFFICIENCIES	
EQUIPMENT SCHEDULES WITH MOTORS (MECHANICAL SYSTEMS)	
MOTOR HORSEPOWER:	SEE SCHEDULES ON THIS SHEET
NUMBER OF PHASES:	SEE SCHEDULES ON THIS SHEET
MINIMUM EFFICIENCY:	SEE SCHEDULES ON THIS SHEET
MOTOR TYPE:	SEE SCHEDULES ON THIS SHEET
NO. OF POLES:	SEE SCHEDULES ON THIS SHEET

OUTSIDE AIR CALCULATION										
UNIT	DESCRIPTION	GROSS AREA (SF)	NET OCCUPIED AREA (SF)	# OF PEOPLE/ 1,000 SF	TOTAL NUMBER OF PEOPLE	CFM/PERSON	CFM/SF	AIR DISTRIBUTION EFFECTIVENESS	TOTAL REQUIRED OA CFM	DESIGNED OUTSIDE AIR CFM
AHU-1	SUPERMARKET	37,219	27,914	8.0	223	7.5	0.06	1.00	3,350	3,600
RTU-DB										200
TOTAL									3,350	3,800

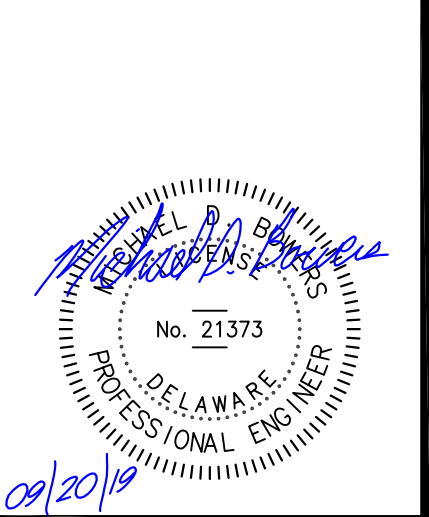
MARK	MAKE-UP AIR (CFM)	EXHAUST AIR (CFM)	SERVICE
AHU-1	3600	--	
RTU-DB	200	--	DELI/BAKERY
EF-2	--	600	RESTROOMS
EF-3	--	300	LOUNGE
EF-4	--	180	JANITOR CLOSET
EF-5	--	180	DELI/BAKERY CLOSET
EF-6	--	750	RACK OVEN (INTERMITTENT)
KH-1	--	920	DELI/BAKERY HOOD (INTERMITTENT)
KH-2	--	600	DELI/BAKERY HOOD (INTERMITTENT)
TOTAL	3800	3530	
TOTAL DIFF.:	3800 - 3530 = (+) 270 CFM		



Yates-Chreitzberg-Hughes Architects, Corp.
Architecture
Interior Design
Land Planning
Project Management

BOWERS CONSULTING, PA
1620 South MLK, Jr. Avenue - Suite 106
Salisbury, NC 28144
T: 704-630-0075 F: 704-630-0051
DE COA: 4390

Professional Seals



Interior Alteration For:
FOOD LION
2110 Executive Drive, Salisbury, NC 28145/ Ph: 704.635.8250
Store No. 1458
30214 Sussex Hwy
Laurel, DE 19956

OWNERSHIP OF INSTRUMENTS OF SERVICE:
All reports, specifications, plans, computer files, field data, notes, and other documents and instruments of service shall remain the property of the Design Professional. The Design Professional shall retain all common law, statutory and other reserved rights, including the copyright therein.

This drawing is the property of Yates - Chreitzberg - Hughes Architects and is not to be reproduced or copied in whole or any part. It is not to be used on any other project and is to be returned upon request.
© Copyright 2019
Project No.: 1458FLMK20
File Name: 1458 M6.01_00.dwg
Date: 09-20-19

Revisions:

MECHANICAL SCHEDULES

Mechanical
M6.01

YCH Commission Number
19018.00

7035 Northwinds Dr NW
Concord, NC 28027
704 . 788 . 2000
ycharch.com